

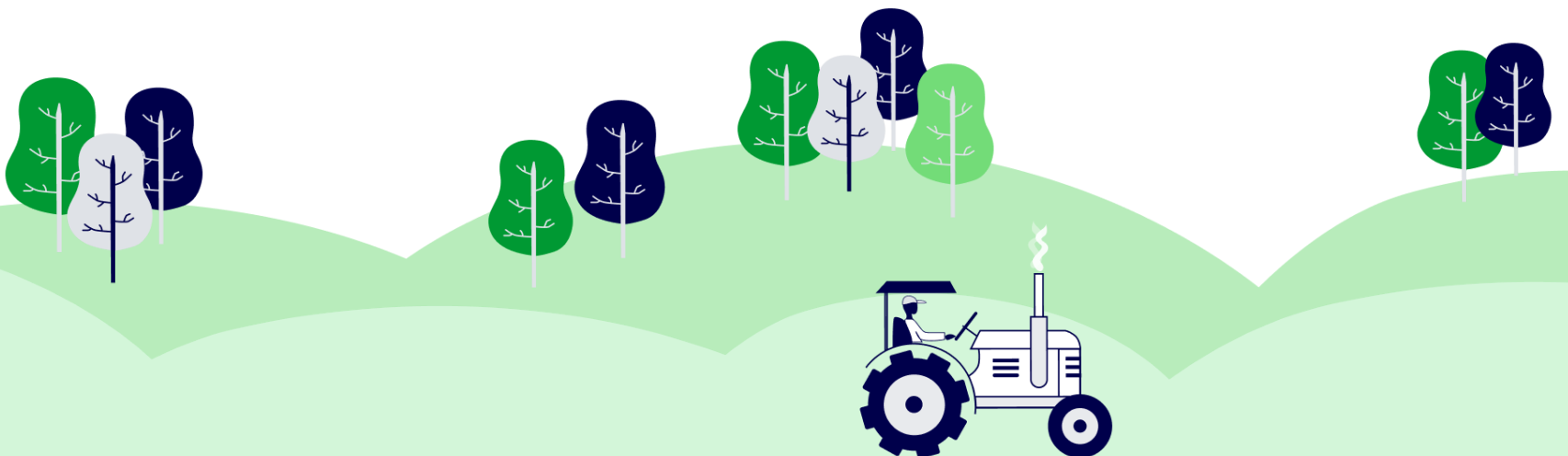


# Farm Sustainability Benchmark Report

2024

Potato

Potato- East PSA



# Leadership Level Performance

## Your Summary

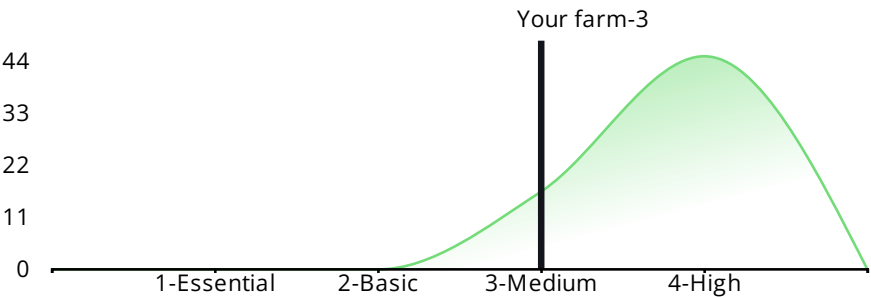
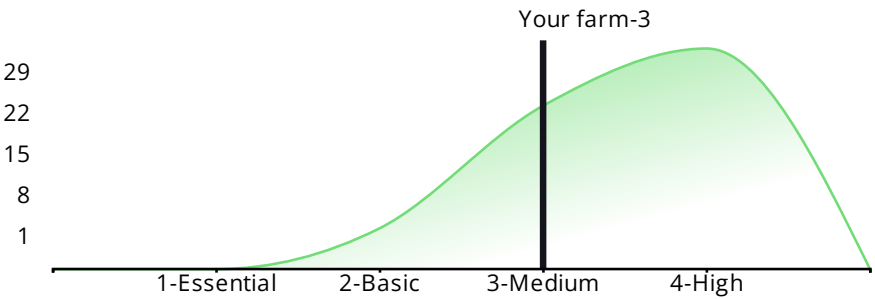
### Biodiversity and Habitat

#### What you're doing well:

- You collaborated with others at the regional level on initiatives to improve biodiversity, restore species and/or facilitate migration paths.

#### Opportunities to improve:

- Improve existing areas or establish new habitat for pollinators on your farm



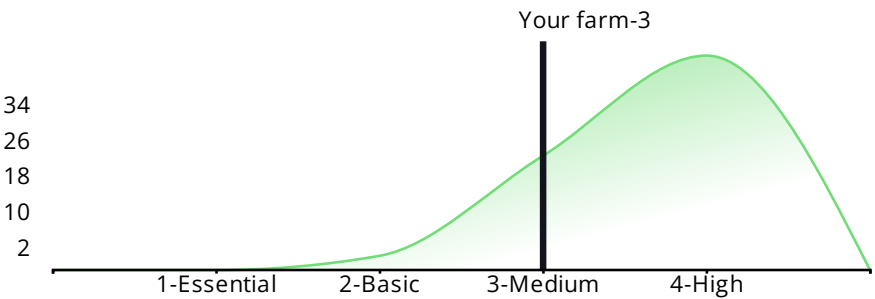
### Community Leadership

#### What you're doing well:

- Your hired workers have the right of association or union membership if they choose, and the functioning of such organizations is allowed.

#### Opportunities to improve:

- Ensure hired workers are paid regularly, paid overtime, have one day off work per week, and have equal opportunities, any legally required benefits, such as paid vacation, sick leave, and compensation for work-related injuries are provided, and contracts are established in accordance with regulation and best practice and workers are informed of their rights.



### Water Impact

#### What you're doing well:

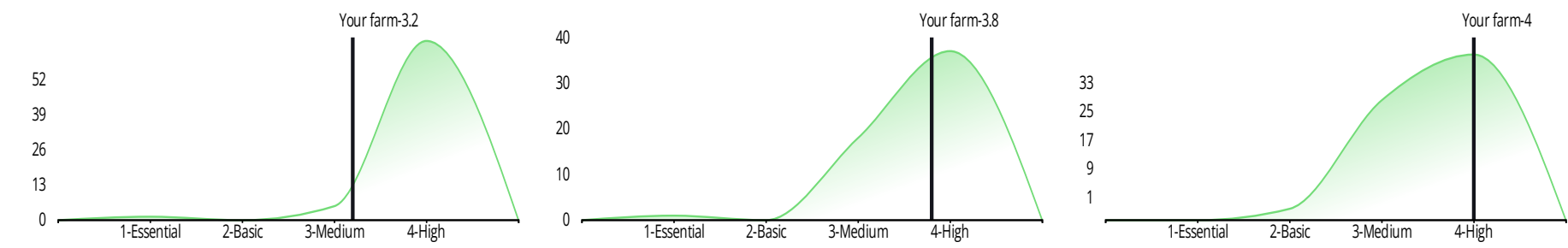
- You adopted changes and upgraded irrigation equipment and infrastructure to enable greater efficiency and precision.

#### Opportunities to improve:

- Establish an irrigation scheduling capability that adjusts to changing environmental & crop conditions throughout the season

# Your Other Results

 Human and Animal Health     Optimal Production     Soil Health

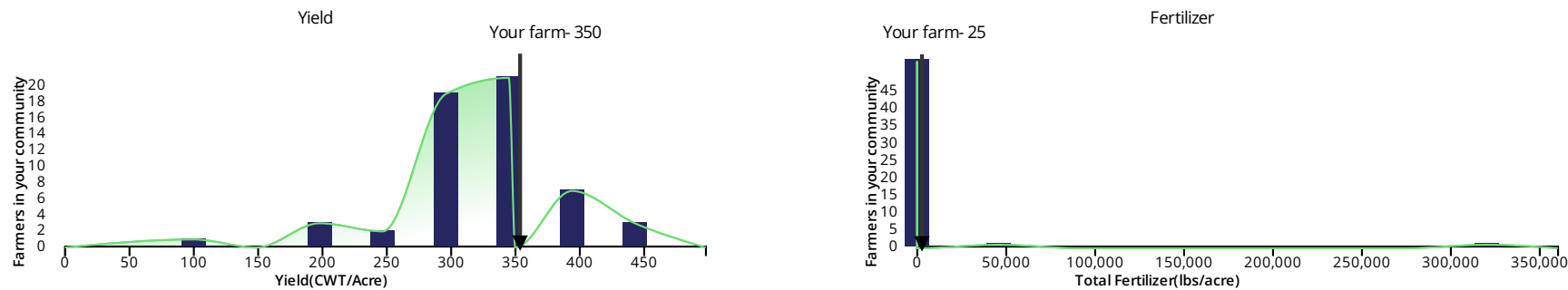


## Management Practices

The following are selected from practices the grower said they are not currently doing. These practices are rated and ordered by their adoption among respondents, particularly those who scored the highest on the outcomes framework.

- Pest management plan
- Map environmental or human inhabited areas to inform your stewardship of these areas
- Information used to minimize negative impacts on non-target areas and non-target organisms
- Practices used benefit non-target areas and beneficial insects
- Pest monitoring beyond own farm to selectively target pests

## Crop Performance



# Community

The factors below were used to Benchmark your responses to others with similar operations

State/Region:	Wisconsin
Total Farmers:	56
Potato Acres:	52539.5
Average Potato Acres:	939
Total Acres:	52539.5
Umbrella Partner:	Potato- East PSA

# Leadership Levels

The factors below were used to Benchmark your responses to others with similar operations



**High**  
Your practices are optimized and your influence provides benefits beyond your operation.



**Medium**  
Your practices are well informed and you're consistently bringing new practices to your operation.



**Basic**  
Beyond compliance, your practices are well established and you're engaged in learning to bring new practices to your operation.



**Essential**  
You are essential in this category, you are compliant with regulatory requirements.

# Feedback

Your feedback is important to us as we encourage producers like yourself to continue to participate and find value in our sustainability initiatives. Please reach out via email to leave us feedback: [support@syngentadigital.com](mailto:support@syngentadigital.com)

